



9th February 2023  
Week 2, Term 1

## "Better Together" "Mahi Tahī"



This week has felt like it has flown by. I hope that you all enjoyed the long weekend and the warm weather.

Here at school we had a wonderful whānau house afternoon last Friday. Thank you for supporting your children with the mufti to support their house colour. It allowed the children and staff the chance to connect easily with each house group.

On Tuesday we presented the house badge to Aurelia who had missed out at Prize Giving and we welcomed a new house leader to Rūaumoko. Hunter has taken on this role and did a fantastic job at last week's games.



The gaga dodgeball pit has been started this week. Gary is working hard to get the posts into the almost concrete like ground. Once he has the corner posts in and then the posts at the halfway mark on each side it will start to come together quickly.

I would like to say thank you to the PTA for their support with this project.

For those wondering what a gaga dodgeball pit is here is the one we used at Woodend Camp 18 months ago that inspired this build.



This year Year 4 - 8 will be attending **swimming sports** on the 14th February at the Dudley Pool. A note will go out to these children so you can help them find out what they want to compete in.

Please make sure you have returned the forms to the classroom teacher if your child falls into this age group. For the first time in a couple of years we welcome you back to the pool to support the tamariki in this sporting event. Races start at 1pm with action in the small pool, followed by 25m non competition races in the main pool and then the 50m races.



### Ashley Rakahuri School Community Picnic

**When:** 17th February

**Time:** 5.30-6.30pm

**Where:** at school

**What to bring:** BYO food and drink, blanket, maybe some games to play

Come along and meet other members of our community. We would love to see you all here.



### WORKING BEE

**When:** 19th February

**Where:** At School

**Time:** 10am - 1pm

Please come along for an hour or two and help us clean up the gardens and playground areas. Many hands make light work.



First Meeting of the year is 16th February at 7pm in the school staffroom.

We would love you to come along and join us and become part of the team supporting fundraising and fun in the school.

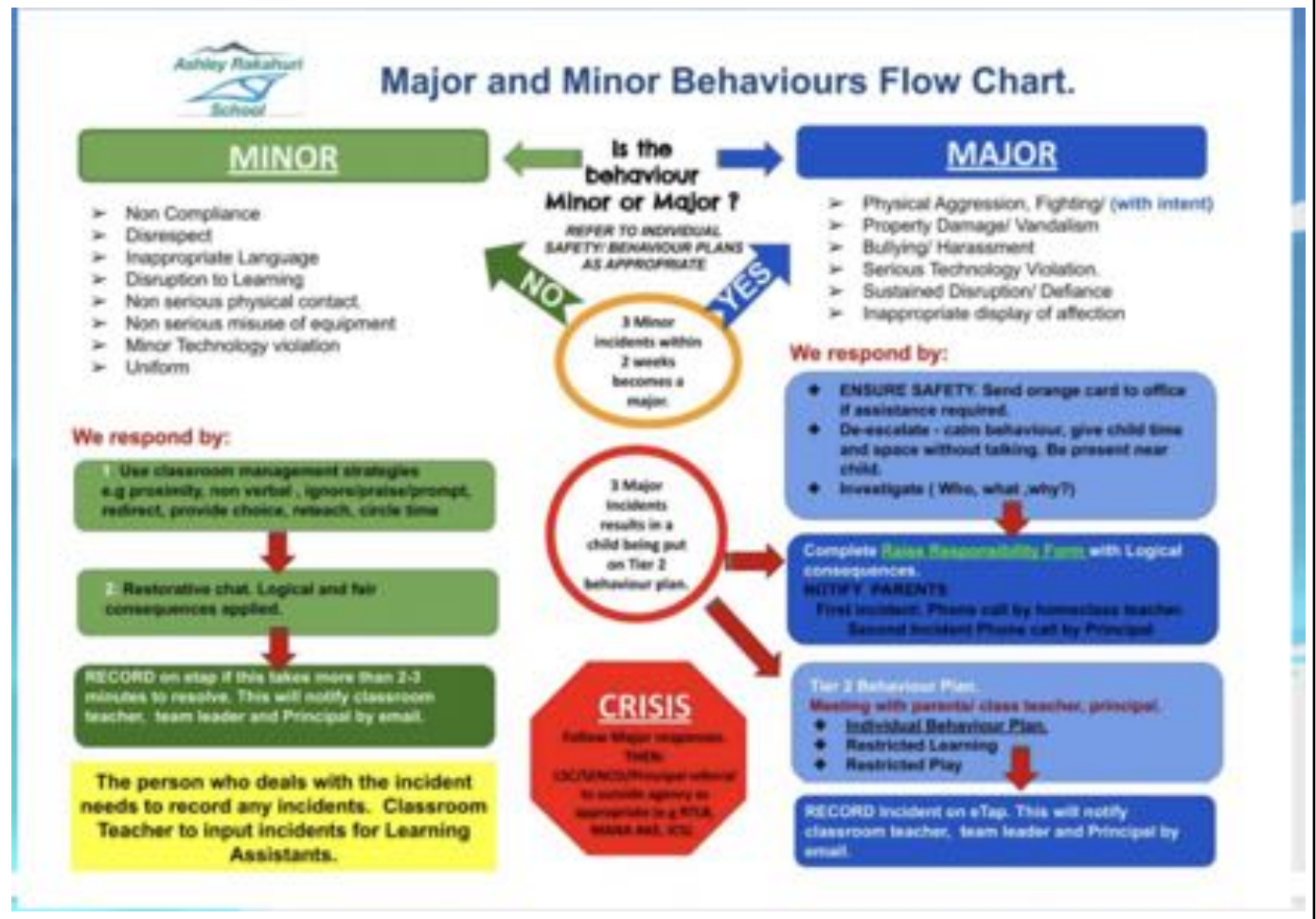


This is our kīwaha for the week.  
Have a go and see if you can use it during your week somewhere.

Each fortnight we have a focus at school that we share with the children in Assembly on Monday. This week we met on Tuesday seeing as we missed Monday. The focus was on the REACH values and we discussed how to remember them as REACH is an acronym for the values.



At this first Assembly we also looked at the Behaviour Flowchart we have for the school. I have attached it here (it is on the website as well).



## Term Dates for 2023

**Term 1:** 30th January - 6th April  
**Term 2:** 26th April - 30th June  
**Term 3:** 17th July - 22nd September  
**Term 4:** 9th October - 18th December

**NOTE: Teacher Only Days will be 24th April and 16th November**

### DATES TO REMEMBER

13th February	BOT Meeting 7pm Staffroom
14th February	Year 4-8 Swimming Sports at Dudley Pool
16th February	PTA Meeting 7pm Staffroom
17th February	Community Meet and Greet 5.30pm
19th February	Working Bee 10am start
22nd February	Special Education Parent Information Session 2.30pm
27th February	Tri-Schools Swimming sports at Dudley Pool
3rd March	Early Finish to School 12.40 due to Paid Union Meeting for Teachers
14th March	Rakahuri Swimming Sports at Dudley Pool
16th March	PTA AGM Meeting 7pm Staffroom
20th March	Goal Setting Interviews with teachers from 1.30pm NB: School will close early
21st March	NC Swimming Sports at Dudley Pool
27th March - 6th April	Year 1-6 swimming Lessons at Dudley Pool
6th April	Canterbury Swimming
6th April	Last day of Term 1
7th April	GOOD FRIDAY and school holidays begin
24th April	Teacher Only Day
25th April	ANZAC Day
26th April	Term 2 begins

Linda Horne

Principal/Tumuaki

[principal@ashleyrasahuri.school.nz](mailto:principal@ashleyrasahuri.school.nz)