

Kia ora whānau

What a great start to the term we have had. The weather is making a huge difference and we are making the most of this to have children outside and active. Unfortunately, the field has had to be closed due to the amount of mud that was brought into classrooms on Monday straight after the carpets had been cleaned. The toilet areas were also not pleasant after so many dirty shoes going through.

This term one unit of work across the school focuses on part of our health programme called "Navigating the Journey". For seniors, part of this means a look at pubertal change. This programme is undertaken every two years. As an introduction to this our Public Health Nurse, Catherine Dowle, is coming to run an information session for parents on the 6th August from 6-7pm in the hall. She will then run a lesson each for Year 5 and 6, and then Year 7 and 8. The evening session is a good chance for you to hear more about the programme and to ask any questions you may have. As the sessions within class draw nearer your child's teacher will be sending out information of the topics to be covered via Seesaw. If you are not comfortable with any given topic you are able to request that your child is not involved in the session by leaving a message with the teacher via Seesaw.

New Enrolments

In order to help us with our planning for 2025 can you please let us know if you have a pre-schooler turning five next year. It would be great to have these enrolments done next term please.



A vibrant red poster for a "Circus Themed Quiz Night". At the top, there is a yellow lightbulb icon and the text "Circus Themed QUIZ NIGHT" in white and yellow. Below this, it says "SATURDAY 17TH AUGUST 2024". In the center is an illustration of a red and white striped circus tent. Below the tent, it says "Rangiora Golf Club" and "Doors open 7pm, Quiz starts 7.30pm". At the bottom, it lists "Teams of up to 6 people, \$120 per team includes grazing platter Cash/Eftpos Bar Register your team at" followed by a QR code. A small illustration of a person holding a megaphone is also present. The PTA logo is in the top right corner.

Please eMail the PTA:

pta@ashleyrasahuri.school.nz to register.
We urgently need to know numbers to know how many we are catering for.

REACH ASSEMBLY FOCUS FOR THE WEEK

This Week's Focus

Building Good Character



Examples

What is Character?

Character are the traits we have. For example are you kind, honest, friendly, hard-working, and responsible?

There are good and bad character traits.

Character defines who we are, how we interact with each other and how we handle everything in our lives.

Character is built over time through experiences and learning from those around you. Good character takes time.

Building character also means reflecting and beginning to take notice of our character, good and bad.

**Mā te whakapono
Mā te Tūmanako
Mā te titiro
Mā te whakarongo
Mā te mahi tahi
Mā te whakamomori
Mā te aroha
Ka taea e mātou**

By believing and trusting
By having faith
By looking and searching
By listening and hearing
By working and striving together
By sheer desire and determination
By all being done by love
We will succeed



Kiwaha



**Kei runga noa atu!
-you're the bomb!**

Our karakia for this term - this is how we start our day and also any assemblies. This was chosen this time by our Kaitātaki and Mrs Standen.

Each week we have a new kiwaha (saying) that we practice as a way to build up our reo. This is introduced on a Monday at assembly.

Dates for your diary

6th August - Parent Information Evening around "Navigating The Journey 6-7pm with Public Health Nurse

12th August - School Photos

17th August Quiz Night

23rd August Teacher Only Day

28th August Whole School Poetry Finals - 11am

2nd-13th September - Swimming Lessons at Dudley

16th September Learning Conferences

20th September Ka Matakura o Ruataniwha - North Canterbury Kapa Haka Festival 12-2pm Rangiora Baptist Hall

27th September - Term 3 Ends

14th October - Term 4 starts

28th October - LABOUR DAY

1st November -Gumboot Friday

3rd November - Colour Run

14th November - Teacher Only Day

15th November - Canterbury Show Day

24th November - Tūhono Kapa Haka Festival

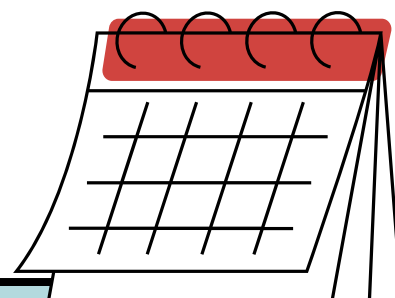
10th December Year 8 Leavers Dinner

12th December School Reports Go Out

13th December Christmas Mufti Day

16th December Whole School Prizegiving

17th December End of School Year



Linda Horne

Tumuaki/Principal

principal@ashleyrakahuri.school.nz

Kia ora -

We live locally and have a holiday home in Hanmer Springs.

It's perfect for two families to have a low-cost, fun, weekend away.

We've decided to make it available to let on AirBnB and

thought school families and staff would enjoy it. We'll donate \$20 per weekend booking to the school.

It's 4 bedrooms and 2 bathrooms and sleeps up to 10 people.

Sunny open plan living area. Very close to the Hot Pools.

<https://www.airbnb.co.nz/h/17chisholmcres>
nga mihi Chris Cooke



ASHLEY SCHOOL

Term 3 Lunches

SUSHI LUNCHES FORTNIGHTLY WEDNESDAY

Commencing week 1 of term on 24th July

Orders close 9am



To open a Lunchonline account..

it's simple all you need to do is register an account at

www.lunchonline.co.nz

1. Login/Place an Order
2. Create an account
3. Add member/s include name, school and classroom number
4. Under Lunch Orders select student name – Start order and place your order
5. You will be directed to the make a payment page
6. A pop up will confirm 'your order has been successful' or check 'Order History' tab
7. Any queries please call us on 0800 LOL LOL (0800565565)

