

Kia ora whānau

This week I am finally back from a bout of Covid. It is nice to be back and reconnect with the staff and tamariki alike. In my absence Juanita O'Loughlin did a fine job of keeping things on track onsite and I was able to continue work from home most days - for a part of the day anyway.

How good are the Olympics?! The commitment these elite athletes put into their chosen sport is mindblowing. What struck me the most this week was the outstanding sportsmanship and humility of our triathlete, Hayden Wilde, at the finish line when, after leading in the run leg for the majority of the time, was pipped at the post. His first action was to sit with a fellow competitor and congratulate him before thinking about himself. He showed what sport is all about - giving it your all and knowing you left it all out there, but being gracious in defeat.

Just a reminder: On Monday 6th August our Public Health Nurse, Catherine Dowle, is coming to run an information session for parents around the lessons taught for pubertal change from 6-7pm in the hall. All welcome.

Scholastic Book Club Closes 9th August 2024

School Docs Policy Review

Please follow the link to review this terms policies. We value your feedback.

<https://ashleyrakahuri.school.nz/policies-procedures/>

New Enrolments

In order to help us with our planning for 2025 can you please let us know if you have a pre-schooler turning five next year. It would be great to have these enrolments done next term please.



Ashley Rakahuri School PTA

**Circus Themed
QUIZ
NIGHT**

.....
SATURDAY 17TH AUGUST 2024
.....



Rangiora Golf Club
Doors open 7pm, Quiz starts 7.30pm

.....

 Teams of up to 6 people, \$120 per team
includes grazing platter
Cash/Eftpos Bar
Register your team at 

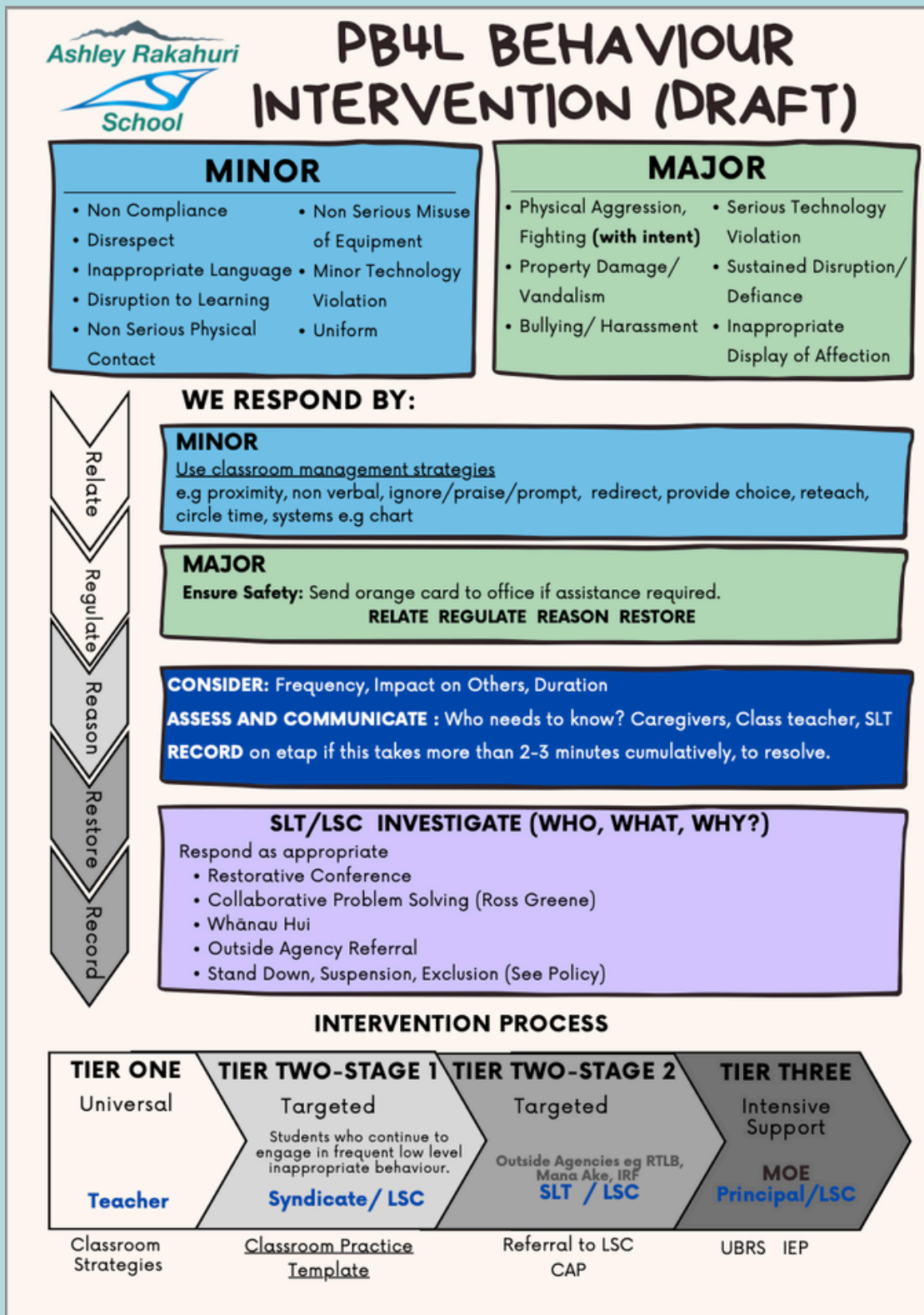
SPOT PRIZES - RAFFLES - AUCTIONS

Please eMail the PTA:
pta@ashleyrakahuri.school.nz to register.
We urgently need to know numbers to know how many we are catering for.

Our Updated Behaviour Plan - DRAFT

This year we have been working as a staff to update our behaviour plan as we felt the one we had in place was not fit for purpose with our new learnings around PB4L (Positive Behaviour for Learning) and Restorative Practice. We also felt that the old plan meant that we were hamstrung by our own system in the order that parents and senior leadership could become involved in an incident. As a result, we have created this new draft plan that we will be trialling for the remainder of the year. Please take a look and be in touch with any questions.

NB: SLT = Senior Leadership Team (Linda Horne, Juanita O'Loughlin and Lance Taylor)
 LSC = Learning Support Coordinator (Sue Graham)
 CAP = Classroom Action Plan
 IEP = Individual Education Plan
 URBS = Understanding Behaviour and Responding Safely Plan



Achievement Data - Overall Teacher Judgements June 2024

An overall teacher judgements (OTJ) involves drawing on and applying the evidence gathered up to a particular point in time, in order to make an overall judgement about a student's progress and achievement.

No single source of information can accurately summarise a student's achievement or progress. A range of approaches is necessary in order to compile a comprehensive picture of the areas of progress, areas requiring attention, and what a student's unique progress looks like. Using a range of approaches also allows the student to participate throughout the assessment process, building their assessment capability. Because of this, to assess a student in relation to National Curriculum levels, teachers need to bring together a range of evidence in order to form an overall teacher judgment.

Overall teacher judgements of achievement and progress involve combining information from a variety of sources, using a range of approaches. Evidence may be gathered in the following three ways:

- Observing the process a student uses to complete a learning task.
- Conversing with the student to find out what they know, understand and can do.
- Gathering results from formal assessments, including standardised tools. (TKI, 2019)

OTJ's are made by referring to expected curriculum levels for the end of a school year. The teacher has to make a judgment as to whether they believe a child is tracking towards meeting their expected curriculum level by the end of the year. It relies heavily on teacher judgement (as the title suggests).

Below is our mid year data for the school as a whole. From the data you will see that we are able to identify the areas we want to work on more to support our learners.

Summary of Data for June 2024 At or Above Expected Curriculum Level Percentages			
	Reading	Writing	Mathematics
Overall	76	81	84
Boys	72	78	91
Girls	79	83	76
Māori	68	79	79
Pasifika	100	100	100

Attendance

As you will have heard in the media the Government is very interested in attendance data and the correlation between this and achievement. As such they have started to give us more detailed analysis of our data each term. The terms they use are as follows:

Chronically Absent: (missing three or more days a fortnight) attending less than 70%

Moderately Absent: (missing two days a fortnight) attending 70-80%

Irregular Absence: attending 80-90%

Attending regularly: (attending on average 9 days a fortnight) - 90%

Our data slipped in Term 2 due to an increasing number of in term holidays and the amount of sickness. While sickness is a justified absence, holidays are not and are noted and recorded as such. Any time your child is absent with no reason given, or not a justifiable reason they are marked as truant. If your child is chronically absent for a period of time then it is my obligation to report this to the Ministry of Education and Attendance Services.

Date Range	Mon 1st Jan 2024 TO Mon 15th Jul 2024							
	Regularly attending		Irregular absence		Moderately absent		Chronically absent	
	Number	%	Number	%	Number	%	Number	%
All	101	64	45	28	11	7	2	1

REACH ASSEMBLY FOCUS FOR THE WEEK

This Week's Focus

Building Good Character



Our Focus for the week:

We want everyone to build and focus on and building strong character.

The main things we want you to focus on are:

- 1) **Doing your absolute best - even when no one is watching.**
- 2) **Showing good manners and being polite.**
- 3) **Take opportunities and have a go at everything.**
- 4) **Treat people in a kind and respectful way.**

Puritia mai rā tika he kōrero
Puritia mai rā te pono hei
wānanga

Puritia mai rā te aroha he
awhina i te ngākau a tangata
Kia tū, kia atea, kia mārama
Hui ē, Tāiki ē

Allow the truth of the mind to speak freely
Allow the truth of the heart to learn
Allow the love of humanity to be open to
opportunities
So as to stand unencumbered and with
clarity
Let us be one, united in our thoughts



Kiwaha



Haere tonu!
-Keep going!

Our karakia for this term - this is how we start our day and also any assemblies. This was chosen this time by our Kaitātaki and Mrs Standen.

Each week we have a new kiwaha (saying) that we practice as a way to build up our reo. This is introduced on a Monday at assembly.

Dates for your diary

6th August - Parent Information Evening around "Navigating The Journey 6-7pm with Public Health Nurse

12th August - School Photos

17th August Quiz Night

23rd August Teacher Only Day

28th August Whole School Poetry Finals - 11am

2nd-13th September - Swimming Lessons at Dudley

16th September Learning Conferences

20th September Ka Matakura o Ruataniwha - North Canterbury Kapa Haka Festival 12-2pm Rangiora Baptist Hall

27th September - Term 3 Ends

14th October - Term 4 starts

28th October - LABOUR DAY

1st November -Gumboot Friday

3rd November - Colour Run

14th November - Teacher Only Day

15th November - Canterbury Show Day

24th November - Tūhono Kapa Haka Festival

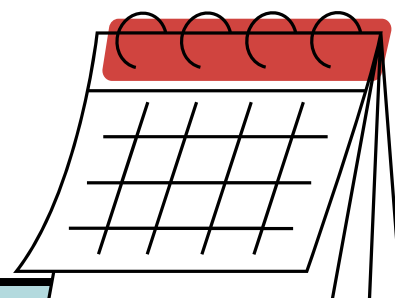
10th December Year 8 Leavers Dinner

12th December School Reports Go Out

13th December Christmas Mufti Day

16th December Whole School Prizegiving

17th December End of School Year



Linda Horne

Tumuaki/Principal

principal@ashleyrakahuri.school.nz



Circus Themed QUIZ NIGHT



WE NEED YOUR HELP!

Can you help us raise funds for our children by donating the following?

- Block of Chocolate
- Grocery Vouchers
- Vouchers for Goods and Services
- Valued between \$20 - \$100

These donations reduce our operating costs, meaning more funds can go towards our children's education.

PLEASE DROP YOUR DONATIONS
INTO THE SCHOOL OFFICE

*Thank
you!*



 lunchonline
www.lunchonline.co.nz

ASHLEY SCHOOL
Term 3 Lunches

SUSHI LUNCHES FORTNIGHTLY WEDNESDAY

Commencing week 1 of term on 24th July

Orders close 9am



To open a Lunchonline account..

it's simple all you need to do is register an account at

www.lunchonline.co.nz

1. Login/Place an Order
2. Create an account
3. Add member/s include name, school and classroom number
4. Under Lunch Orders select student name – Start order and place your order
5. You will be directed to the make a payment page
6. A pop up will confirm 'your order has been successful' or check 'Order History' tab
7. Any queries please call us on 0800 LOL LOL (0800565565)