

Kia ora whānau

It has been such an interesting time in the media with all the announcements about the maths curriculum, ERO, and changes in education in general. The changes being announced are sent to school Principals about an hour before they go to the public and so it is causing a fair amount of uncertainty across the education sector.

Our maths results for the end of 2023 for Year 8 show that 86% of our Year 8's were at or above their expected curriculum level based on the curriculum that we are teaching at the moment. The testing done that is being referred to in the media is on a curriculum that has not yet been used in schools.

At Ashley Rakahuri School, we support improvements to our education system that are going to improve outcomes for the tamariki we teach. With this in mind, we will be looking carefully at the DRAFT curriculum in maths that has just been sent to us in the last couple of days and working forward from here.

Our kura has been proactive in developing and up skilling our staff with two and a half years of professional learning development focussing on maths with Sue Graham, a registered facilitator of mathematics. As a school we are incredibly lucky to have Sue on our staff in her other role as our Learning Support Coordinator as we are always able to ask any questions around maths that may come up. We currently have two staff members continuing this with Rob Proffitt-White.

Any changes that we make to our programme will be well considered and informed by best practice.



Thank you to all the teams who have entered for Saturday night. We are looking forward to an entertaining night with our community.

Doors open at 7pm with the quiz starting at 7.30pm. Please arrive early to find your table and get settled in.

Some things on the night will require you to have some cash so please come prepared for this.

A huge thank you to everyone who has donated prizes or vouchers for this.

Enrolments

Thank you to everyone who has enrolled their children for 2025.

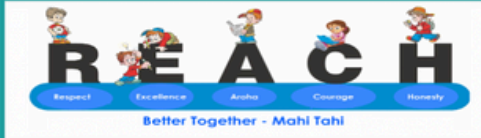
On the flip side of enrolling, if you know your child is moving school for 2025 can you please let us know as this helps me sort our numbers.

**Reminder: Teacher
Only Day Friday
23rd August**

REACH ASSEMBLY FOCUS FOR THE WEEK

This Week's Focus

Growth Mindset



Examples

Flexing our mindset muscle:

Fixed mindset- It's just the way it is, it will never change.
Growth Mindset- Believe we can improve, get better and reach our goals. Work to get there by always learning and always growing

Watch your words:

Change "I can't do it" "I'm no good at this" to "I'm still learning" "I'm not great at this, YET."

Change your perspective:

Don't be so down on yourself on the things you didn't do so well. Start viewing "failure" as a process of learning. No one starts something new being perfect at it.

Take a different view:

Look at your challenges as opportunities and grow as a result.

Puritia mai rā tika he kōrero
Puritia mai rā te pono hei
wānanga
Puritia mai rā te aroha he
awhina i te ngākau a tangata
Kia tū, kia atea, kia mārama
Hui ē, Tāiki ē

Allow the truth of the mind to speak freely
Allow the truth of the heart to learn
Allow the love of humanity to be open to
opportunities
So as to stand unencumbered and with
clarity
Let us be one, united in our thoughts



Kiwaha



Karawhiua!

-Go hard, give it
heaps

Our karakia for this term - this is how we start our day and also any assemblies. This was chosen this time by our Kaitātaki and Mrs Standen.

Each week we have a new kiwaha (saying) that we practice as a way to build up our reo. This is introduced on a Monday at assembly.

Dates for your diary

17th August Quiz Night

23rd August Teacher Only Day

28th August Whole School Poetry Finals - 11am

2nd-13th September - Water Safety Lessons at Dudley

16th September Learning Conferences - early close of school 12.30pm

20th September Ka Matakura o Ruataniwha - North Canterbury Kapa Haka Festival 12-2pm Rangiora Baptist Hall

27th September - Term 3 Ends

14th October - Term 4 starts

28th October - LABOUR DAY

1st November -Gumboot Friday

3rd November - Colour Run

14th November - Teacher Only Day

15th November - Canterbury Show Day

24th November - Tūhono Kapa Haka Festival

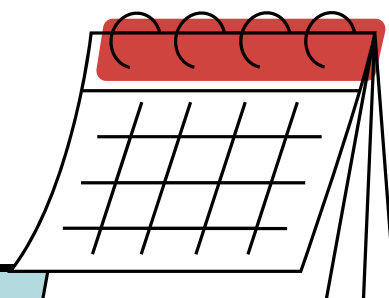
10th December Year 8 Leavers Dinner

12th December School Reports Go Out

13th December Christmas Mufti Day

16th December Whole School Prizegiving

17th December End of School Year



Linda Horne

Tumuaki/Principal

principal@ashleyrasahuri.school.nz

RUN / BIKE / RUN FOR EVERYONE

3 Races - 3 Venues

INDIVIDUALS - FIRST TIMERS - TEAMS - KIDS

- **Race #1 - Mandeville September 1st**
- **Race #2 - Orton Bradley September 22nd**
- **Race #3 - Southbridge October 20th**

ENTER AT WWW.JDEVENTS.CO.NZ