

Kia ora all

PAID UNION MEETING
EARLY FINISH.....21ST AUGUST 12.30-3.00PM

PLEASE ENSURE YOU EMAIL ME ON: principal@ashleyrasahuri.school.nz
IF YOUR CHILD REQUIRES SUPERVISION ON THIS AFTERNOON WHILE THE
STAFF ATTEND THE MEETING.

TEACHER ONLY DAY
22ND AUGUST SO THAT STAFF CAN COMPLETE MOE PROFESSIONAL DEVELOPMENT IN THE
REFRESHED MATHEMATICS CURRICULUM.

Water Safety Lessons

These start on Monday. Children go on the bus to and from the pool. Please keep an eye out for a message from your child's classroom teacher about this. Next week we swim Monday, Tuesday, Wednesday and Friday and the following week from Monday to Thursday. Children need goggles, towel and togs all named in a bag please. The teachers in the junior and middle school rely on parent help at the pool to support children so please get in touch with your child's teacher if you can help.

11-12 Tī Kōuka and Kōwhai

12.30-1.30 Harakeke

1.30-2.30 Mānuka

Tōtara have three lessons in the first week.

Secure your tickets now to this showcase of student creativity!!



ARWA
ASHLEY RAKAHURI WEARABLE ARTS
EXTRAVAGANZA

BE IN QUICK!
OVER 60
TICKETS
PRESOLD TO
ARWA
WHĀNAU

Date: Friday 12th September
Time: 6:00-7:00pm (approx)
Location: School Hall

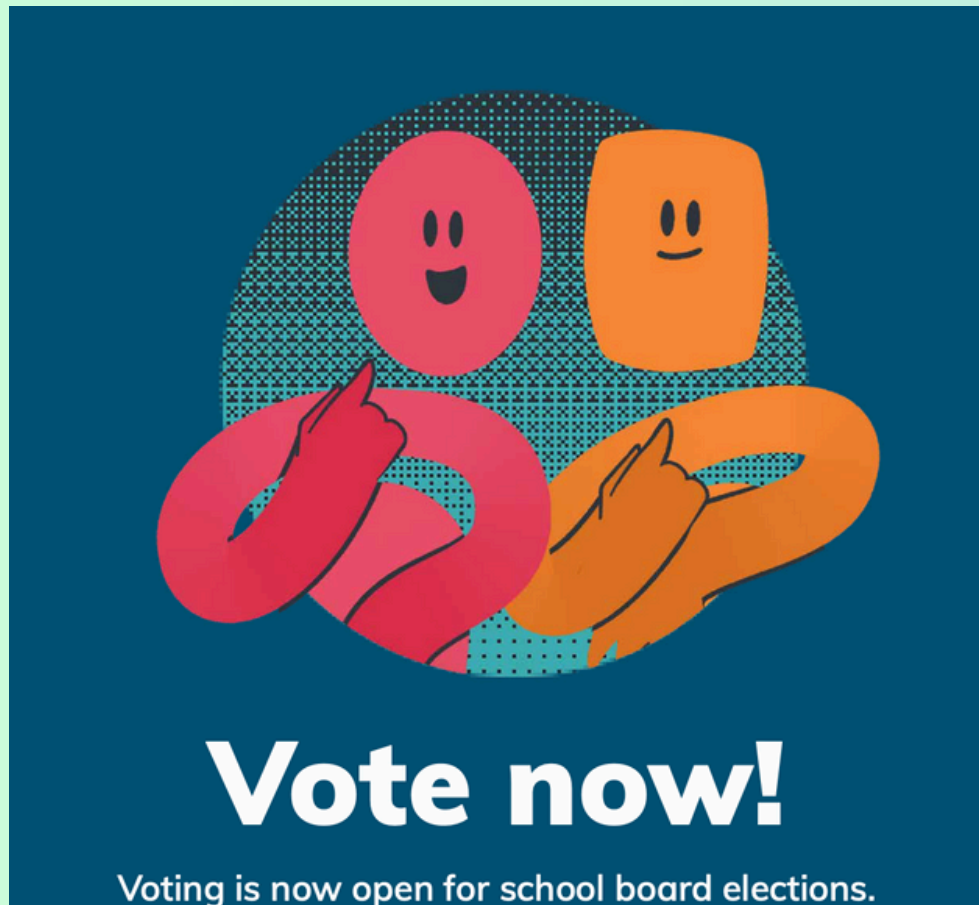
TICKET INFORMATION
Email Tanya
office@ashleyrasahuri.school.nz
with your ticket order to receive an invoice.
Tickets will be sent home with your child once
payment is received.

PRICES
\$5 PER CHILD
\$10 PER ADULT
\$20 FAMILY PASS (MIN 4 PEOPLE)

**BRING CASH ON THE
NIGHT FOR THE PTA
RAFFLE!**

**COME AND SUPPORT OUR
TALENTED DESIGNERS. YOU
WON'T WANT TO MISS THIS
NIGHT OF IMAGINATION
AND FUN!**

Board Of Trustees Elections



Please find attached **Mike Noad's blurb** for elections as this did not make it onto the election sheet.



My name is Mike Noad and I am a proud parent of Archer (Year 6, Tī Kōuka) and Georgia (Year 4, Harakeke Tūi). I am standing for election to the Board of Trustees to contribute to the continued success and wellbeing of our school.

Together with my wife Haley, we own and operate Tussock Creek Apparel and I work full time as Mechanical Team Leader at Daiken New Zealand.

My professional and business experience has equipped me with strong leadership, financial management and strategic planning skills and I am practical and solution focused and know how to cut through complexity and get things done. I understand the importance of clear communication, accountability and working collaboratively to achieve shared goals. Just as important, I am approachable, open-minded and someone who values input from others and will work hard to ensure every family feels heard and represented.

If elected, student wellbeing and achievement will come first, together with supporting our teachers and staff to deliver high quality education.



DAFFODIL DAY

Friday 29th August

**Wear yellow
Non uniform day**

Donations can be made via lunch online or cash
collection on the day.

Funds raised will go to the Cancer Society



***Lunchonline* is also where you can order sushi for your child every second Wednesday. Go online to check the dates for this.**

REACH ASSEMBLY FOCUS FOR THE WEEK

This Week's Focus

Taking responsibility for your belongings

We are noticing lots of people's belongings being left out, uncared for and unattended.

- + Clothing - jerseys, jackets
- + Lunch boxes / Drink bottles - containers, rubbish, whole pieces of food.
- + Sports Equipment - sports shed, personal stuff
- + Bags and Devices

Why Caring for Our Own Belongings Matters

The three reasons below highlight how something seemingly small—looking after one's school belongings—actually contributes meaningfully to a child's developmental journey, both academically and personally.

Practical Life Skills

Organisation, routines, problem-solving

Character Growth

Accountability, confidence, self-discipline

Social Development

Trust, respect, teamwork, better relationships

Welcome to Listening to Families

Listening to Families videos provide answers to everyday questions about health and wellbeing challenges facing children and adolescents. The questions the videos answer are real - they come directly from families. The answers are provided by trusted specialists.

Follow this link to the website that has a range of videos and now also Spotify podcasts that can help with wellbeing and health challenges with families.

<https://www.listeningtofamilies.co.nz/>

KARAKIA TĪMATANGA

Matua te tihi
Matua te kaha
Matua te āio
Matua te mana
Whiua te hā kino
Tokia te hā ora
Ki ruka, ki raro
Ki waho, ki roto
Hui e, tāiki e

Connect to strength
Connect to energy
Connect to peace
Connect to mana
Strip away the negative
Instill the positive
From above, from below
From outside and from within
United and connected



Each week we have a new kiwaha (saying) that we practice as a way to build up our reo. This is introduced on a Monday at assembly.

Our karakia for this term - this is how we start our day and also any assemblies. This was chosen this time by our Kaitātaki and Mrs Standen.

Dates For Your Diary!

- 21st August Early finish for PUM 12.30pm
- 22nd August -Teacher Only Day
- 4th September 'Take the Floor' Speech Finals - Year 4-8
- 5th September Ruataniwha Kapa Haka Performance
- 10th September Quad School Speech Finals
- 12th September Ashley Rakahuri Wearable Arts Show
- 16th -18th September Koru Games Year 7 and 8
- 19th September -End of Term 3
- 6th October -Start of Term 4
- 23rd October Whole School Athletics at Loburn Domain
- 27th October -Labour Day
- 29th October Tri School Athletics at Loburn Domain
- 10-12th November -Year 5 and 6 camp to Woodend
- 11th November Rakahuri Zone Athletics
- 13th November -Teacher Only Day
- 14th November -Show Day Holiday
- 26th November Canterbury Athletics
- 30th November Tūhono Kapa Haka Performance
- 2nd-5th December -Year 7 and 8 camp to Living Springs
- 9th December Whole School Prize giving at Baptist Church Hall
- 10th December Year 8 Leavers Dinner at RSA
- 15th December - End of School Year
- 29th January 2026 - Whānau Hui
- 30th January - School Open for Instruction
- 6th February Waitangi Day Holiday
- 9th February Teacher Only Day - MOE Maths PLD

PLEASE NOTE: ALL DATES ARE NOW ON A GOOGLE CALENDAR ON OUR WEBSITE